

#

Safety Bulletin Breda International Airport EHSE



At 28 and 29 of October 2024 a large crane will be erected at position : N 51 33'10 E 004 32'25

Radial and distance from ARP : 254⁰/0,5 nm

Distance from DER (Departure end of runway 24) : 0,28 Nm / 530 meter.

Height 126 FT from GND. Maximum.

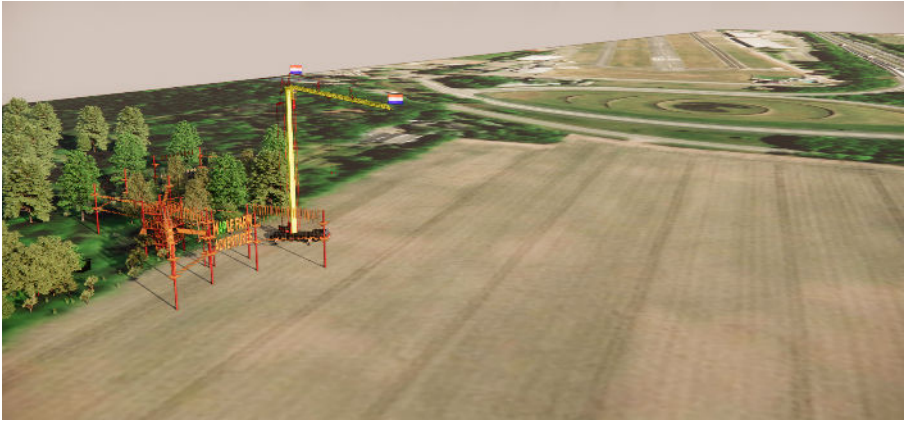
This large yellow crane will be fitted with 2 checkered white and red flags situated at center turning point and end of boom.

In this period from 28 oct 24 until 29 oct 2024 Breda International Airport will be under PPR.

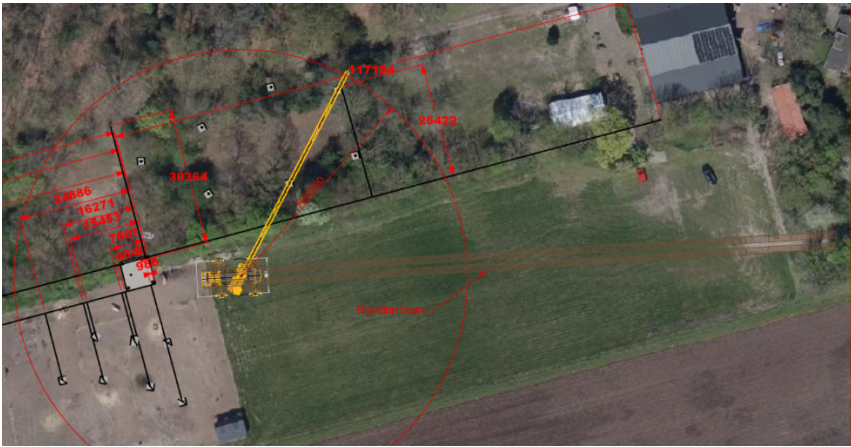
Pilots should read this safety bulletin before conducting flight operations at EHSE.

- Do not fly north of centerline runway 24. During takeoff and touch and go's runway 24 obstacle is right of upwind leg. Obstacle should be taken into account during departure especially during EFATO (Engine Failure After Take Off)
- Do not deviate north (right) of centerline during departure runway 24 adhere to the departure procedure runway 24.
- Best Rate of Climb after departure runway 24 should be attained after liftoff.
- Caution: during approach runway 06 height and distance to erected crane will be difficult to be estimated.
- Southerly wind will cause drift to north upwind leg runway 24 and final runway 06.

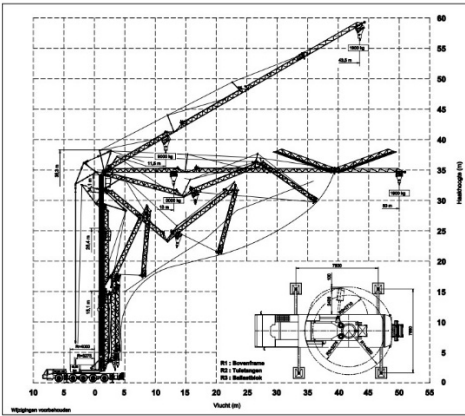
If you have read this bulletin you will find your PPR number on the bottom of this document



Final runway 06 view



Top view 0,5 nm west of aerodrome



PPR number EHSE for flight operation at Breda International Airport.

BIA-2428

#####